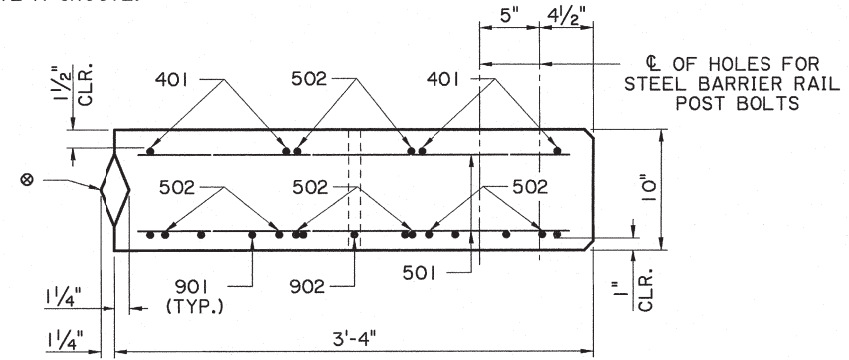
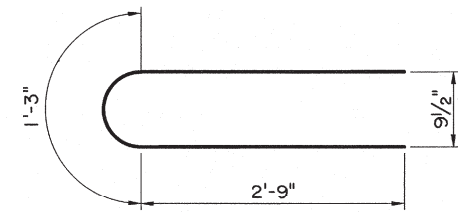


TYPICAL SECTION

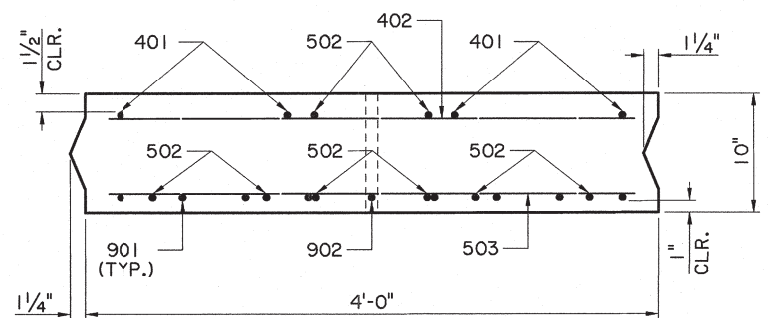
⊗ FOR EACH SPAN, ONE EXTERIOR UNIT WILL HAVE A TONGUE AND ONE WILL HAVE A GROOVE.



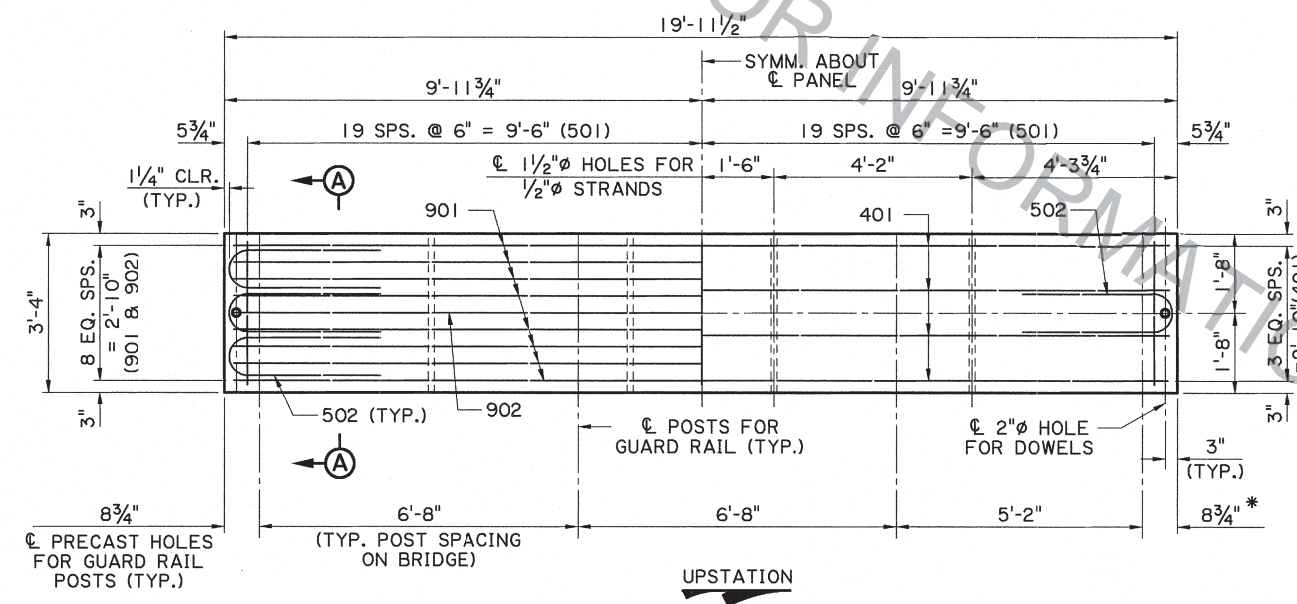
SECTION A-A



502 (5" PIN)

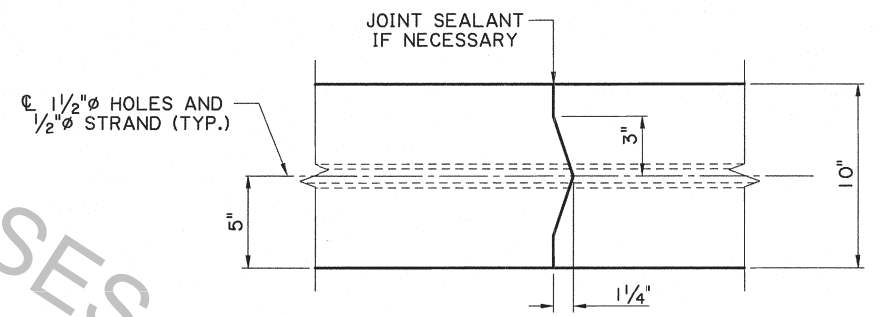


SECTION B-B



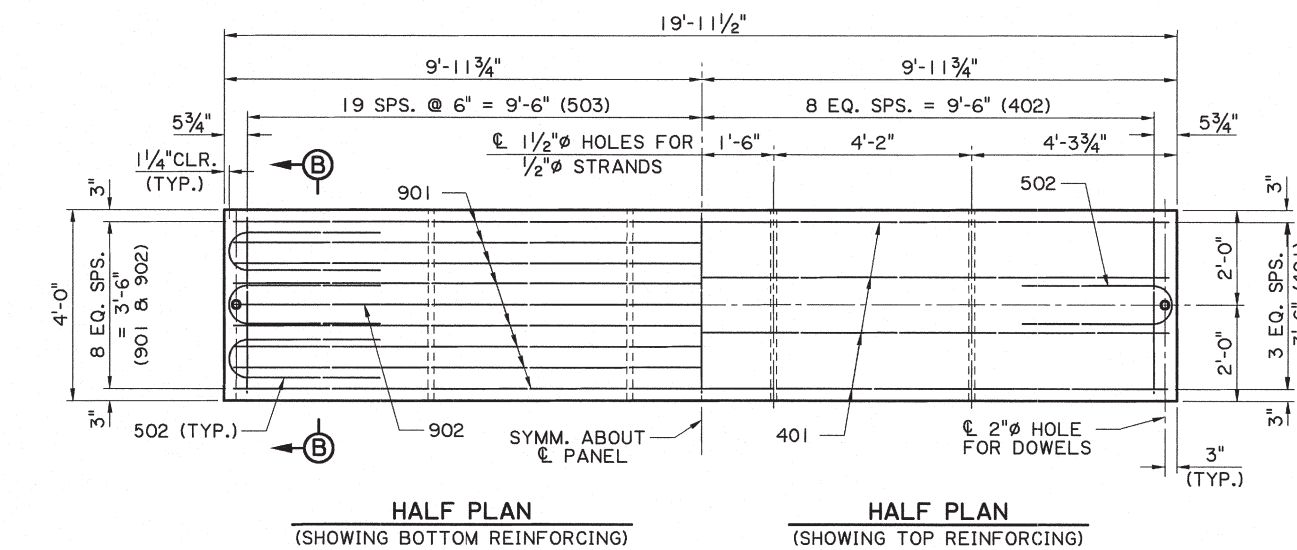
EXTERIOR UNIT

\* TO ALLOW FOR CONNECTION OF GUARD RAIL AT END OF BRIDGE SPANS ONLY. HOLES NOT USED SHALL BE FILLED AND CAPPED. SEE "POST HOLE DETAIL" ON SHEET 15 OF 16 FOR MORE INFORMATION. SEE GUARD RAIL DETAILS SHEET FOR POST HOLE PATTERN.

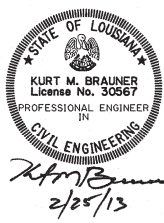


DETAIL "A"

NOTES:  
 FOR GUARD RAIL INFORMATION, SEE STANDARD PLANS AND GUARD RAIL DETAILS.  
 EACH UNIT SHALL HAVE AN UPWARD CAMBER OF 1/2".  
 WHERE GUARD RAIL POSTS ARE REQUIRED ON EXTERIOR UNITS, A BOLT ANCHORAGE PLATE SHALL BE CAST INTO THE UNIT AT THE POST LOCATIONS. FOR MORE INFORMATION, SEE "SLAB CONNECTION DETAIL" ON GUARD RAIL DETAILS SHEET.



INTERIOR UNIT



Kurt M. Brauner  
2/25/13

SHEET NUMBER	
DESIGNED	K. BRAUNER
CHECKED	J. PELTIER
RETAILED	K. BRAUNER
CHECKED	P. VAUGHT
REVIEWED	
SERIES #	14 OF 16
BY	K.M.B.
DATE	03-01-17
NO.	03-01-17
DESCRIPTION	UPDATED FOR 2016 SPECIFICATIONS
REVISION OR CHANGE ORDER DESCRIPTION	
BRIDGE & STRUCTURAL DESIGN	
PRECAST CONCRETE DECK PANEL DETAILS	
BD.2.B.1.0.14 PRECAST PANEL DETOUR BRIDGE	